

Appendix 4

Engagement and information provided to Denbigh MAG

July 2023	Special informal meeting of MAG to consider Legal Counsel advice on the merits of the respective sites from a planning law perspective
March 2023	Special informal meeting of MAG to clarify information previously provided to elected members following the October meeting and to consider the findings of the feasibility report on site B.
October 2022	Special informal meeting of MAG to discuss concerns arising from pre-planning consultation. Request for information regarding why location of Denbigh chosen; regional element of the school; carbon implications; status of land; interaction with Denbigh High; proposal to upgrade field and funding timescales. Agreed to pause planning application pending clarity on the information requested.
October 2022	Presentation to MAG on update of progress of project, update on pre-planning consultation. Concerns raised that presentation from Wates as part of pre-planning consultation to MAG had not been actioned. Agreed for special meeting with Chief Executive to discuss further.
July 2022	Presentation to MAG on update of progress of project including progress of school reorganisation consultation
May 2022	Written briefing provided to all Denbigh Members to ensure all aware of position of project.
March 2022	Site Visit with Members to clarify site location and proposals with representatives of Wates Construction and officers from Denbighshire including Highways, Leisure and Design and Construction together with Education.
February 2022	Presentation to Members focussed on the following areas:- Background to proposal, information regarding selected site, rationale for proposal, summary of progress including appointment of Wates Construction and engagement with school and internal officers; illustrative layout of site including building and access; timetable for project and next steps including issuing of press release and pre-planning engagement.
November 2021	Report to Members on progress of Band B projects including an update on the proposal for Ysgol Plas Brondyffryn to be placed on playing fields at Denbigh High School
November 2019	Special informal meeting of MAG to share proposals to be presented to Cabinet in December 2019. Discussion focussed on the three projects for Denbigh including discussion on the proposed location for Ysgol Plas Brondyffryn

Report for Denbigh MAG meeting- 27th March 2023

Why are we proposing to keep Ysgol Plas Brondyffryn in Denbigh?

1.0 Introduction

Ysgol Plas Brondyffryn, since its establishment, has always been based in or around the town of Denbigh. It is a special school for teaching children on the autistic spectrum. Pupils attend the school from all over Denbighshire and neighbouring counties.

This document considers the location of Ysgol Plas Brondyffryn in relation to the impact of change on the following factors:

- Existing links within Denbigh
- Pupil location
- Location of staff
- Carbon emission from staff and pupil travel
- Out of county placements
- Costs

2.0 Existing links within Denbigh

Ysgol Plas Brondyffryn has strong links with Denbigh High and retaining the link is important. Through this relationship, each year pupils are identified that would benefit from some time in the 'mainstream' setting at Denbigh High to prepare for mainstream college, should this be an appropriate opportunity. If the school was moved out of Denbigh it is likely that the established links would come to an end and a new link forged with a nearby school. Implementing a link would require an additional investment in appropriate staff training.

The schools residential unit which supports pupils and their families is also in Denbigh and is staying in Denbigh. If the school was to relocate this would mean the school would not be close to its residential provision. This would create additional operational challenges for the school and would also increase travel time for resident pupils.

Retaining links with the town of Denbigh is important to the school. 48 % of the schools staff live within the LL16 area. The Governors are keen to ensure that the new building and its facilities will be accessible to the community to use out of hours.

3.0 Pupil location

There are currently 133 pupils at Ysgol Plas Brondyffryn. In February 2023, Denbighshire County Council's Cabinet approved a Statutory Notice to increase the capacity of the school to coincide with the completion of a new school building. Predicting where future pupils of the school will live but we can consider the impact of relocating the school site on the existing cohort.

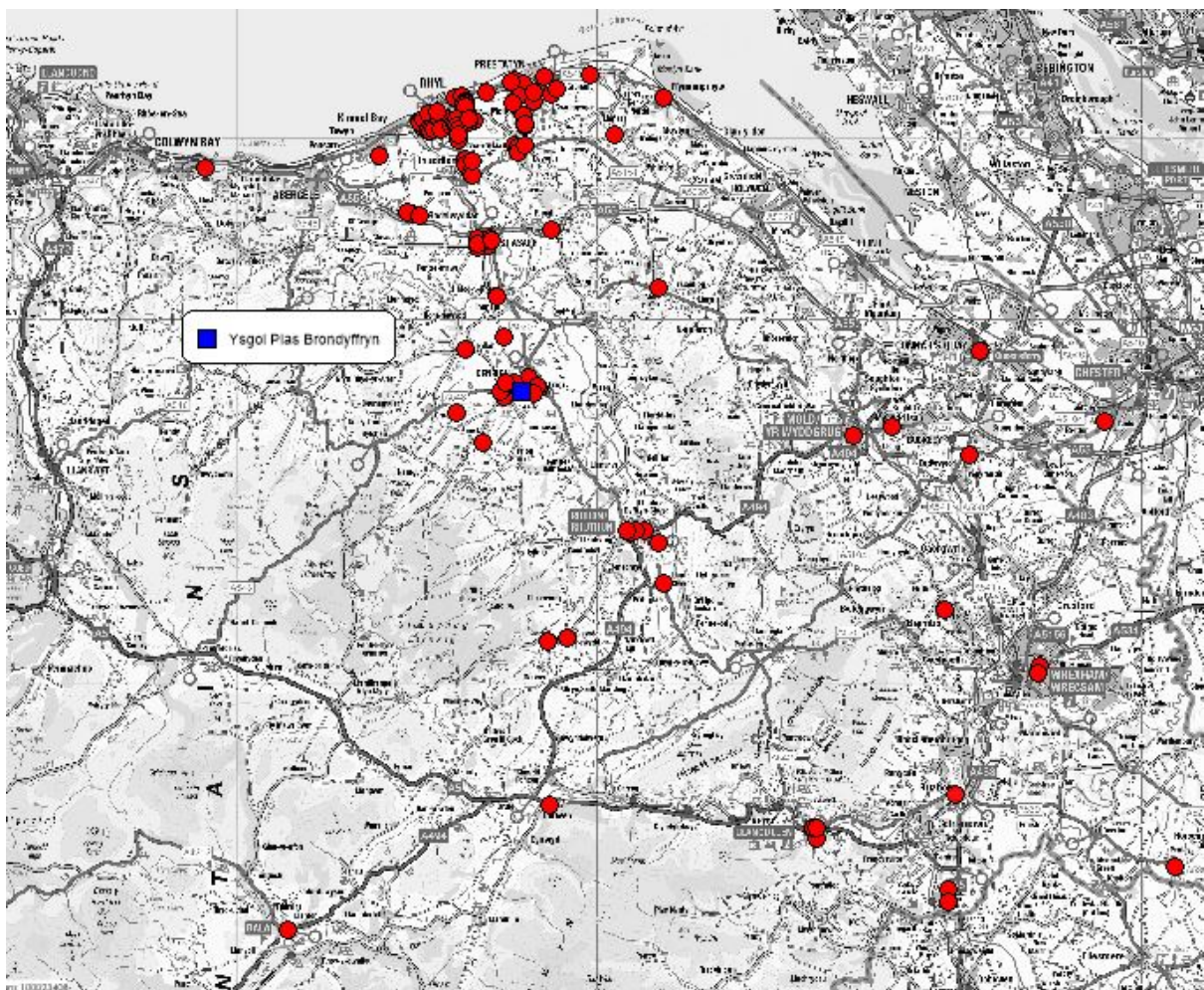
Current proximity to the existing school sites

Distance	Number of pupils
1 mile or less	8
1.1 to 5 miles	8
5.1 to 15 miles	97
Over 15.1 miles	20
	133

The majority of pupils travel between 5 and 15 miles to the existing sites.

The average distance that pupils travel is 11.7 miles.

The map below is based on the current pupil cohort:



The map illustrates that the highest density of the current pupils live in the north of the County, however it also shows the fact that pupils access the provision from all areas of Denbighshire and neighbouring counties.

3.1 Impact on pupils travel

As the highest density of pupil reside in the north of the county. A list of alternative sites is available in appendix 1. Moving the school to a site in the Rhyl/Prestatyn

area in the north of the county would reduce the travel time for a significant proportion of pupils but would also cause a significant increase the travel time for pupils living in the south of the county and out of county. For example a change to a site in the LL18 (Rhyl) area would mean that the number of pupils (based on the current cohort) living over 15 miles away from the site would increase.

Distance	Denbigh	Rhyl	Change +/-
5 miles or less	16	78	+62
5.1 to 15 miles	97	27	-70
Over 15.1 miles	20	28	+8
	133	133	

The travel distance for more than half of the current pupils would be less than 5 miles to a new site in the Rhyl area.

The average distance that pupils travel would be 9.1miles.

There is also an increase in those pupils who are travelling over 15 miles to get to school from 15% in Denbigh to 21% in Rhyl. It should also be noted that the proportion travelling over 30 miles would increase to 8% of the total pupils.

Transport for ALN pupils is not comparable to mainstream settings and is focused on pupil's requirements and an assessment of individual needs. The number of pupils within close proximity to the school site increases if the school is in the north of the county however there is likely to remain a requirement to transport to all pupils attending based on the needs of pupils.

School transport costs to Ysgol Plas Brondyffryn is made up of the following factors:

- Vehicle and driver availability at time of request
- Home address of Passenger Assistants needed on all transport (have to be picked up first)
- Pupils specific needs i.e. noise levels, travel companions, waiting times general SEN behaviour.
- Pupils specific needs re-equipment – car seats – harness's that will only fit certain makes/models of taxis.
- Contractors starting point in relation to the contract, ie, if no Rhyl firms can provide transport, we will have to pay for the travel for a Denbigh firm for example.

Currently there are a mix of transport arrangements in place:

- A 16 seater that travels with 10 pupils and 2 PA's (extra room needed for pupils who need single seats)
- A lone transport from Llangollen.
- A shared 8 seater from Llangollen that also picks up in Ruthin

All ALN transport is priced on a daily rate taking into account the needs rather than a mileage rate.

3.2 Summary of impact

Denbigh is ideally situated in the middle of the county to ensure travel times are reasonable for all pupils, both from within Denbighshire and those who attend as out of county pupils given the nature of the school.

At present the average distance travelled for individual pupils is 11.7 miles per journey. This would be reduced to 9.1 miles if the school was located in Rhyl. However moving the site to a more northern location would result in a disproportionately negative effect for pupils in the south of Denbighshire and out of county increasing the travel time beyond 45 minutes each journey for them.

The Learner Travel measure doesn't specify a time limit for journeys for home to school transport. However local authorities are required to assess the individual needs of learners when considering if a journey time is reasonable. In considering this the local authorities need to consider the learners age and whether the learners have any disability or learning difficulties that need to be accounted for. It could be considered journey times to Ruthin or South to attend a school in Rhyl could present a challenge. The travel time for at least 23 learners could be in excess of 45 minutes if the school was located in Rhyl or Prestatyn based on usual travel times.

4.0 Location of Staff

Currently there are 102 staff at Ysgol Plas Brondyffryn.

79 members of staff reside within Denbighshire and the table below illustrates the post code area of their home address and the type of role they undertake at Ysgol Plas Brondyffryn.

Post code area	Teachers including SLT	Teaching Assistants	Ancillary	Total
LL15 – Ruthin	4	7	2	13
LL16 – Denbigh	5	26	18	49
LL17 – St Asaph	1	3		4
LL18 – Rhyl	2	5		7
LL19 – Prestatyn	2	1		3
LL21 – Corwen	1	2		3
Total – DCC Postcodes	15	44	20	79
Total staff	27	52	23	102

50% of the schools teaching assistants and 87% of the schools ancillary staff live in the LL16 post code area.

Overall nearly 50% of the schools staff live in the Denbigh area.

4.1 Impact on staff

Currently the average distance travelled for staff to their place of work is 8.3 miles. This would increase to 12.6 miles if the school was located in Rhyl.

It is estimated that only 14 members of staff would not be impacted by the change. The largest cohort of staff live in Denbigh (LL16) and the majority of this cohort of staff are employed as Teaching Assistants or in Ancillary roles.

This impact would be mitigated initially to an extent by Denbighshire County Council's policy which states that if the school site is relocated out of the town, staff would need to be reimbursed on any additional mileage that they incurred and this would be paid for 4 years on a sliding scale.

- Year 1- 100%
- Year 2- 75%
- Year 3- 50%
- Year 4- 25%

However after 4 years these payments would come to an end and staff would bear the full cost of additional travel.

4.2 Summary of impact

A change in site would require the vast majority of staff to travel further to their place of work. Initially these staff would be eligible for mileage payments, however this will reduce over the 4 years. Although the impact effects most staff, the impact on teaching assistants and ancillary staff is clear.

5.0 Impact on Carbon emissions

Denbighshire County Council have declared a climate emergency. Therefore, the impact on carbon emissions from travel of both pupils and staff has been calculated on the basis of total miles travelled per individual session.

- Denbigh site – 2,283 miles travelled for staff and pupils per session.
- Rhyl Site – 2,313 miles travelled for staff and pupils

The difference in total miles travelled is less than 100 per session. The comparison is based on a notional site in Rhyl and it is therefore concluded that potentially this figure could increase or decrease. However, due to the fact that a larger proportion of pupils would be closer to a site in Rhyl, the cumulative impact of changing site is impacted significantly by an increase in staff travel.

For both pupils and staff the number of miles would be reduced either via shared home to school transport arrangements or car share options.

6.0 Out of County placements

The table below shows the amount of Out of County placements at the school over recent years. Overall there has been a reduction and currently is 16%.

Child resides...	Jan 2022	Jan 2021	Jan 2020	Jan 2019	Jan 2018	Jan 2017	Jan 2016
in Denbighshire	111	112	97	103	95	79	65
Outside Denbighshire	21	28	29	31	45	49	58
Total	132	140	126	134	140	128	123
% from out of county	16%	20%	23%	23%	32%	38%	47%

7.0 Costs

Relocating Ysgol Plas Brondyffryn to a site outside Denbigh would incur costs, these include revenue cost, capital cost and an economic impact.

7.1 Revenue costs

Initial analysis would identify that revenue costs from relocating the school outside of Denbigh would include the following:

- Staff travel reimbursement (See section 4.1)
- Staff training costs (See section 2.0)
- Additional travel costs for transporting pupils between residential provision and the school.

At this stage it is unquantified whether savings or reduced costs would arise for home to school transport for pupils attending a Ysgol Plas Brondyffryn outside of the town of Denbigh. This would essentially be driven by the provision of supply and the complexity of travel requirements for home to school arrangements including provision for passenger assistants who accompany children.

7.2 Capital costs

Appendix 1 identifies potential alternative sites outside of Denbigh. If the site is not owned by Denbighshire land purchase costs would be incurred by the project which is currently not included in the project budget. Land purchase costs are significant. The last site purchased by Denbighshire County Council cost £621k per hectare in 2017 excluding fees. This indicates that land purchase cost would be a significant consideration in securing a suitable site outside of Denbigh.

In addition all feasibility costs undertaken on existing sites in Denbigh would be abortive work and the project would incur a duplication of these costs.

7.3 Economic impact

Moving Ysgol Plas Brondyffryn out of Denbigh would:

- Result in a loss of over 100 jobs based in the town, currently 49 people live locally- they would have to travel or lose their employment,
- Reduce spend in the town that these jobs bring,
- The town not benefitting significantly from spend linked to the Construction period. The benefit to local businesses of having a construction site in the town for approximately 18 months cannot be underestimated
 - Rhyl High school build- 75% local spend within 30 mile radius,
 - Ysgol Glan Clwyd build and refurbishment- 75% local spend within 30 mile radius,
 - Christ the Word in Rhyl- 83% local spend within 30 radius.

Information provided in December 2022 to MAG members in response to issues raised in October meeting

Carbon implications:

Currently in terms of pupils travel the school has 29 contracts- which is a mix of cars, 8 seaters and 3 16 seaters. 9 of the contracts go to one of the three sites and are lone pupils- the other contracts normally go to two of the sites. The proposal is to

bring all 3 sites together so there could be savings on the number of drop offs taxis will make.

As stated above moving the school out of Denbigh would impact some pupils and staff quite significantly in terms of travel times and mileage increase but it will of course assist some staff and pupils in that the journey would be shorter.

It's important to note that both pupil and staff location will change on a yearly basis as pupil cohorts change and staff leave and new staff come in.

In summary, from a carbon footprint perspective a site located in Rhyl could result in a potential 2,313 miles travelled for staff and pupils whereas the Denbigh site would result in 2,283 miles travelled for staff and pupils per session.

Status of land

The current area being considered is designated as BSC11- Recreation and Open Space. The site is currently part of the Denbigh High School site and is not accessible for general public access-fencing was put up around the field in 2020 due to the active travel route developments and safeguarding concerns. The importance of safeguarding at school sites has led to a greater number of access controls being introduced and the general approach in Denbighshire in recent years is to ensure school playing fields are enclosed areas not accessed by the general public. Any external out of hours use is managed by Denbighshire Leisure Limited in partnership with the school.

Advice from planning was provided which stated "supporting evidence will have to demonstrate that alternative provision of equivalent or greater community benefit is made available locally to meet the policy requirements."

It went on to say that "the supporting statement should include evidence that the playing field at Denbigh High is surplus to the requirements of the school and also provide evidence of what alternative provision has been secured to ensure that the full range of sports can be provided by Denbigh High for the future. A MUGA is not suitable for sports such as rugby, cricket or athletics (not exhaustive) and evidence is required that alternative sites for these activities has been secured that will provide equivalent or greater community benefit."

Policy BSC11 – Recreation and Open Space, which seeks to protect and enhance existing recreation, public open space, allotments and amenity greenspace where possible.

The policy states that;

"Development that would result in the loss of public or private land with recreational and/or amenity value will only be permitted where **alternative outdoor provision of equivalent or greater community benefit is provided.**"

Policy BSC12 – Community Facilities, states that proposals for the provision of community facilities will be supported where they are located within existing development boundaries. The policy proceeds to state that access to community facilities is an essential element of sustainable and inclusive communities. The Council will support and encourage the retention and improvement of community facilities which provide an essential facility to support the sustainability of Denbighshire's communities.

Highways view on current proposal

Highways have responded to the current proposal with the following:

“As Highway Authority we would have no objection in principal to the development of the new school subject to the relevant highway and cycle/pedestrian links being improved at the existing school entrance and the Ruthin Road, Ystrad Road junction.”

Interaction with Denbigh High

This project links closely with the Denbigh High project in a number of ways. As the Plas Brondyffryn project progresses through the milestones the more certainty and confidence of delivery will ensure that a clearer scope for the development of Denbigh High School.

Based on the proposal of developing the Ystrad site the secondary site at Ysgol Plas Brondyffryn will be key to the developments at Denbigh High as this building is in a relatively good condition and will enable Denbigh High to utilise the space to create additional capacity to assist in the redevelopment of the Denbigh High site.

The diagram below illustrates the land that and buildings that would be available to Denbigh High should the Ystrad Road site be developed.



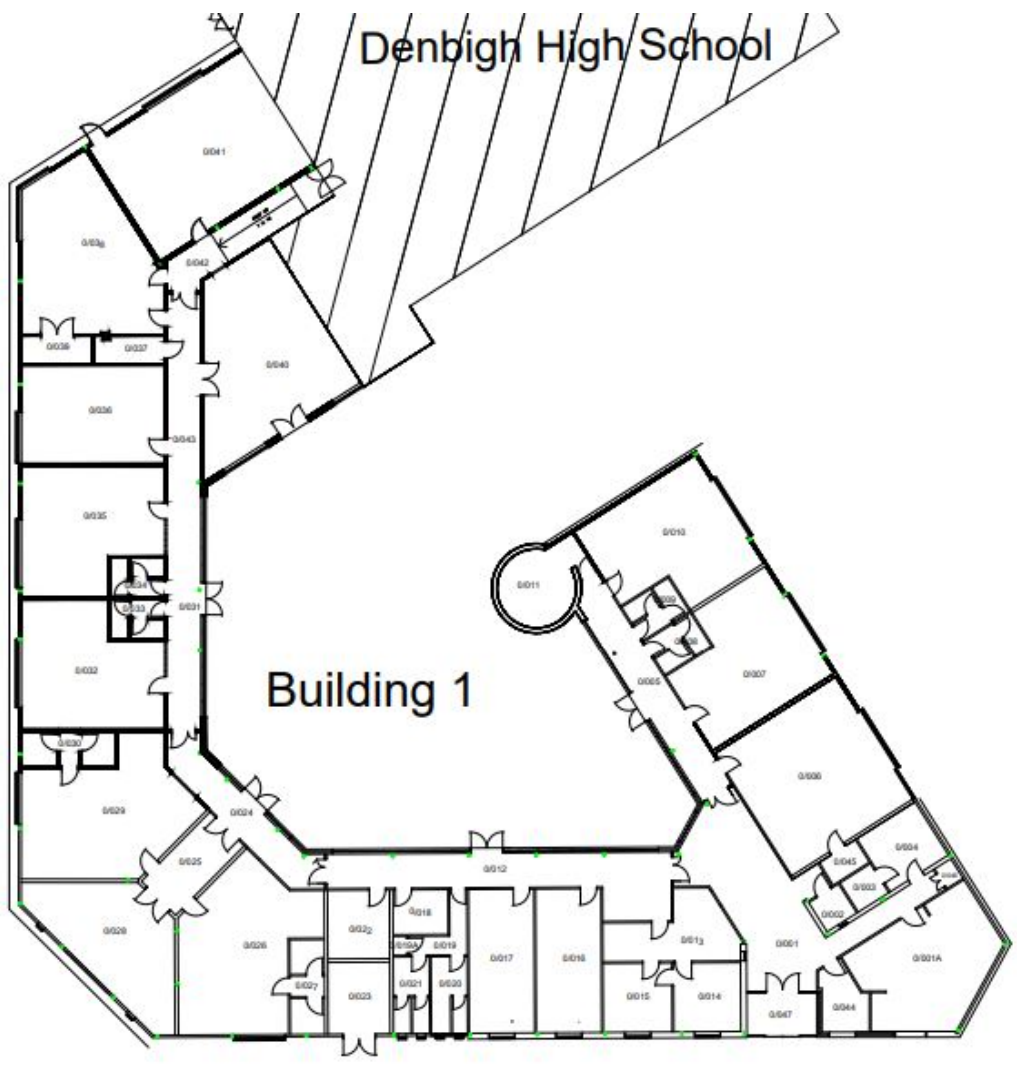
This includes the current Park Road building as follows:-



By Denbigh High taking over this building there is the scope for an additional 13 classrooms to be available to the school which provides approximately 800m² of teaching accommodation. The proposals for Denbigh High, subject to detailed feasibility works, would be likely to see some of the poorer accommodation demolished to allow for improved circulation and external space for students. The provision of this accommodation from Ysgol Plas Brondyffryn would create scope to assist these works.

One of the key issues identified to date would be access to changing rooms for pupils using the Middle Park fields for PE. One option could be the development as part of the remodelled school of changing rooms to allow pupils to access PE lessons from the school site. These options will be considered further when the Denbigh High project is formally commissioned.

Denbigh High School



Building 1



Proposal to upgrade field:

Survey work was undertaken during the summer holidays of 2022 in order to draw up proposals for improvements on the field labelled with the red triangle. The proposal is currently being reviewed and costs analysed. The proposal below shows a 400m running track. It also includes proposed drainage improvements to the existing pitch to the north-west.

When marked out for athletics, it would also be capable of accommodating the existing u15/u16 football pitch in the north-west of the site, and a new senior football pitch located within the infield of the athletics track. With the facilities being natural grass, the senior football pitch area within the athletics track could also be marked out to accommodate a u11/u12 rugby union pitch if required.

When not marked out for athletics, the pitch platform could accommodate a variety of pitch layouts including three u15/u16 football pitches or 3 x u11/u12 rugby union pitches running across the width of the rectangular plateau. Draft proposal of the field is below:

Indicative Costs estimate received for the above is £369,297.

With athletics track:



Without athletics track:



DHS- consultation re loss of playing field?

Meetings with the headteacher of Denbigh High have taken place and will continue to take place as the project develops. Discussions will focus on both fields the school currently have and the wider project concerning the remodelling of Denbigh High itself.

Funding timescales

Band B of the Sustainable Communities for Learning Programme is scheduled to run between 2019 and 2024. Effectively this means that projects which are likely to be at construction stage prior to April 2024 will be delivered as part of the Band B programme.

Denbighshire have been informed by Welsh Government recently that the format for future funding rounds will be revised. Full guidance is awaited but it is understood that local authorities will be required to develop a Strategic Outline Programme of projects to be delivered over a 9 year programme.

This would mean projects would be grouped as follows:-

Years 1,2 and 3 – Projects expected to reach Full Business Case within the 3 years

Years 4,5 and 6 – Projects being developed and going through statutory consultation

Years 7,8 and 9 – Pipeline Projects

The impact on delays to projects may mean that projects may not be able to be delivered under Band B and would need to be delivered under the new rolling programme approach. This would be subject to approval by Denbighshire and Welsh Government of a revised Strategic Outline Programme.

The other significant risk in delays to projects relate to the increase in project costs. Across Wales all construction projects are experiencing significant cost increases and delays in projects will impact negatively on projects. At present Denbighshire has a committed allocation for Band B as part of the Corporate Plan with a similar commitment from Welsh Government based on the approved Strategic Outline Programme approved in late 2020. Any additional cost pressures beyond the funding envelope would need additional resources or a reduction in the number or scope of projects to be delivered.

In terms of moving forward progression of the business case, school organisation proposals and planning proposals need to move forward together in tandem. Expectation from WG that at Strategic Outline Case stage there would be progression on consultation on proposals. For YPB the SOC was submitted to WG at the same time as approval was provided to commence consultation.

For Outline Business Case there is expectation that the project should be relatively developed including determination of any statutory process and completion or finalising of RIBA Stage 2 design.

Briefing paper for Denbigh MAG

May 2022

Ysgol Plas Brondyffryn project:

What is the proposal?

The proposal is to increase the capacity at Ysgol Plas Brondyffryn from 116 to 220. The school would move into a brand new purpose built facility in the town of Denbigh to accommodate the increase.

This proposal does not include the residential provision- Gerddi Glasfryn. This provision will still be accessible to Ysgol Plas Brondyffryn pupils.

The proposed site is on an existing sports field located along Ystrad Road, Denbigh, adjacent to Denbigh Leisure Centre

Why are we doing this?

Currently the school operate over 4 sites in Denbigh- they are at capacity at all sites and demand for places at the school is increasing. Also the current accommodation is not ideal with classrooms too small and not enough break out spaces for pupils who need one to one support.

The project will create the opportunity to develop excellent purpose built facilities which will improve the educational experience of children at the school. The project will also explore Post 16 delivery and what facilities these could bring to the pupils and the wider community e.g. a café.

The new school will have the following benefits:

- Increase places available for pupils in the area with ASC;
- 21st Century school facilities to meet the needs of children with ASC;
- Better learning environment and facilities such as sensory rooms, specialist therapy rooms etc.
- More space and better play provision;
- Better provision for teaching young people life and vocational skills;
- Remove the requirement for staff and pupils to move between sites.

What are the reasons around the choice of site?

The school has always been based in or around the town of Denbigh since its establishment. As a specialist provision it serves a wide catchment area and a large number of pupils are based in the North of Denbighshire in particular in the town of Denbigh.

In consideration the location careful consideration has been given to ease of access to all pupils. A northern location would reduce the travel time for the

majority of pupils but could also significantly increase the time for a group of pupils.

The table below demonstrates that at present the majority of pupils are within 20 miles of the school with only 11.4% travelling in excess of this distance.

Pupil data Jan 2022 Current pupil distribution is as follows:

Distance	Number of pupils	% of school population
Under 1 mile	6	4.5
1-5 miles	10	7.6
5-10 miles	32	24.2
10-20 miles	69	52.3
Over 20 miles	15	11.4
Total	132	100

Pupil data Jan 2022

The initial search for sites in the North of the County, and in particular the growth area of Rhyl and Prestatyn, has not identified a suitable preferred site.

This review has therefore examined whether there remains a justification for retaining a presence in the town of Denbigh.

From an education perspective there are good reasons why the school should remain in the town of Denbigh for a number of reasons. Firstly, the strong links the school has with Denbigh High would be lost if the school moved out of the town. Every year pupils are identified who would benefit from some time in Denbigh High school, mainly at Keystage 4. There are 2 reasons why a pupil might follow a particular study area in Denbigh High, one is that a pupil has a particular passion for that subject and/or are looking to carry on down that route in college once they have left Plas Brondyffryn and Plas Brondyffryn do not offer that subject but Denbigh High does. The other reason is about those pupils who are on target for good Level 2 GCSE grades at Plas Brondyffryn and are probably moving on at the end of Year 11 to go to a mainstream college. These pupils often benefit from time spent in the 'mainstream' setting to prepare for what is to come when they leave Plas Brondyffryn.

This year, 4 Year 10 pupils started GCSE courses in DHS, supported by Ysgol Plas Brondyffryn TAs. An alternative location would require new links to be forged between Ysgol Plas Brondyffryn and another High School. One of the benefits of the work with Denbigh High could be seen as the respective size of the schools. Links with larger high schools may provide a more challenging environment for the pupils accessing the provision on a part time basis as outlined above.

Denbigh is ideally situated in the middle of the county to ensure travel times are reasonable for all pupils, given the nature of the school. As a Local Authority as a general rule, we consider the maximum reasonable journey time to be approximately 40 mins from a pupil's home to school. In regards to SEN/ALN there are other things to consider- pupils may not be able to share a car or pupils may need to go straight to school for medical reasons. Transport for SEN/ALN

pupils is not straight forward and very much focused on pupil's requirements and an assessment of individual needs. Location in the north of the County would result in significant travel times for those pupils living in the South of the county and in neighbouring authorities.

The current area being considered is designated as BSC11- Recreation and Open Space. The site is currently part of the Denbigh High School site and is not accessible for general public access. The importance of safeguarding at school sites has led to a greater number of access controls being introduced and the general approach in Denbighshire in recent years is to ensure school playing fields are enclosed areas not accessed by the general public. Any external out of hours use is managed by Denbighshire Leisure Limited in partnership with the school.

A search of the development boundary of Denbigh has failed to identify a suitable site within the town boundary.

The work to date has identified barriers of land availability for an alternative site for Ysgol Plas Brondyffryn. From a land availability and a service perspective the current location works very well and suits the

What does the School organisation formal consultation process involve?

As we are increasing the schools capacity we need to undertake a formal consultation- this will start on the **17th May until the 27th June 2022**- stakeholders are asked to read a detailed document around the proposal and to fill out a response form stating whether they agree with the proposal or not.

This process will also involve meetings for stakeholders to ask any questions they may have- 2 staff meetings will be held and any other stakeholders wishing for a meeting will be asked to book a one to one session which will be held remotely with Senior education officers and representatives from the school. We will also be doing sessions with the School Council to get their views on this.

Once the consultation is complete e report will be presented to Cabinet in September which will detail responses and recommend a way forward.

How is the proposal being funded?

This is a project within Band B of the Welsh Government's Sustainable Communities for Learning programme, previously 21st Century Schools and College programme. Commitment to this proposal was outlined in a revised Strategic Outline programme, which was approved by Welsh Government in September 2020. The programme included an overall allocation of £23.8m for this project.

As this project is for a special school Welsh Government, subject to the approval of the relevant Business Cases, will provide 75% of the funding with the remaining 25% to be provided by Denbighshire County Council as per the Corporate Plan commitments. The Strategic Outline Case (SOC) was submitted to the Welsh Government at the end of April 2022.

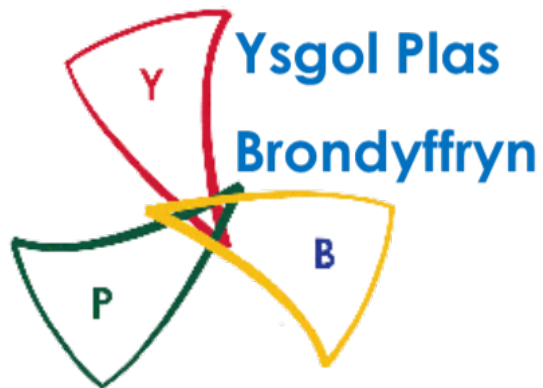
What are the timescales for the project?

	Date
Formal Consultation period	May/ June 22
Cabinet- to agree to publish Statutory Notice	September 22
Statutory Notice Period	October 22
Cabinet- Objection report- decision determined	November 22
Submit Full Business Case to Welsh Government	November 22
Construction- subject to all approvals	Feb 23- Sept 24
Implementation of the Proposal	September 2024

Presentation to MAG – February 2022

Denbigh MAG- Update on Ysgol Plas Brondyffryn

8th February 2022

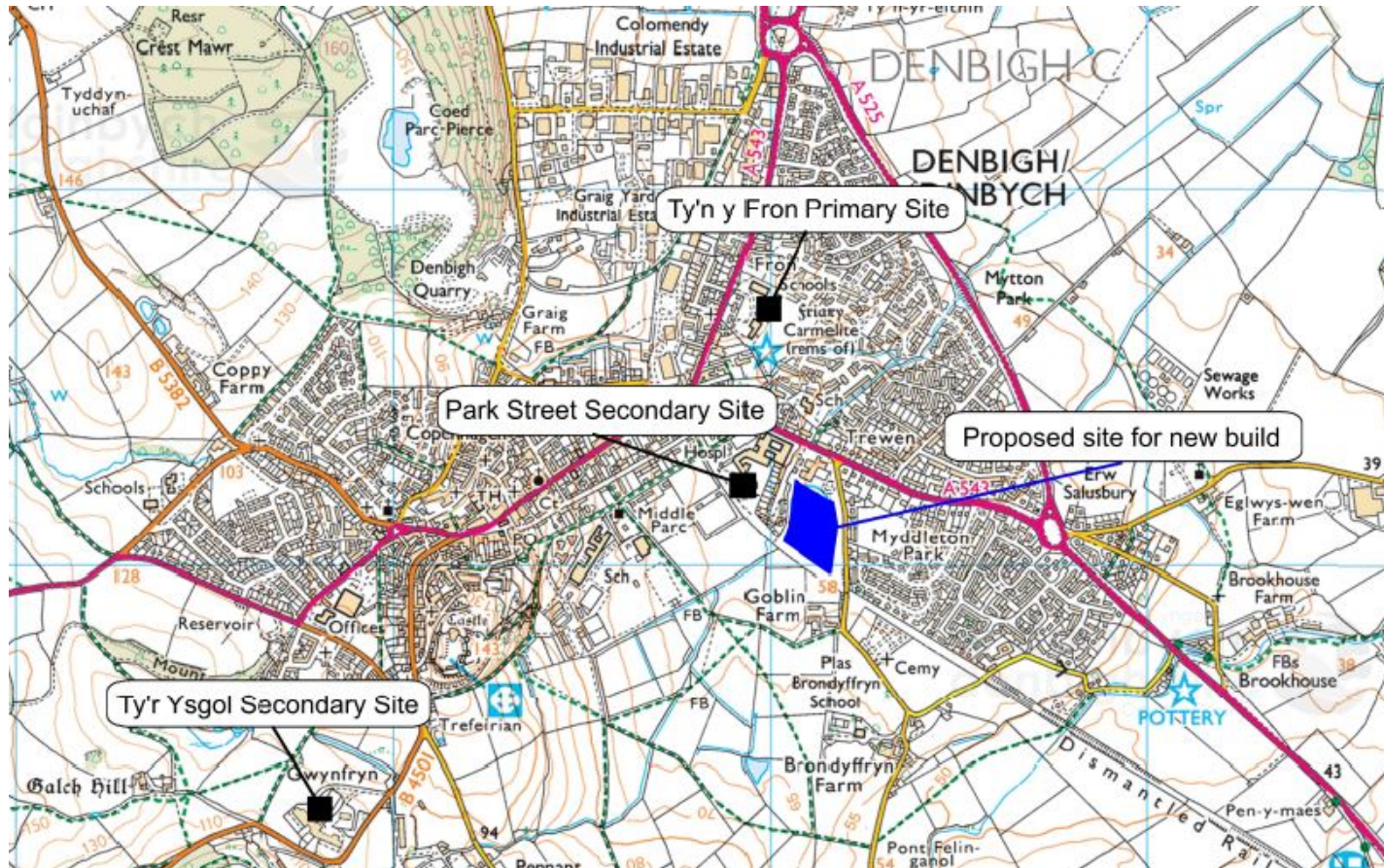


Background

- Commitment to this proposal was outlined in a revised Strategic Outline Programme which was approved by Welsh Government in Sept 2020.
- Band B project-no longer 21st Century Schools programme from January 22 now called the Sustainable Communities for Learning programme.
- Currently drafting the Outline Business Case for Welsh Government to be submitted March/ April.

The Proposal:

To build a brand new building for the school to accommodate around 220 pupils on the Denbigh High playing fields:



Why?

- To bring 3 of the 4 sites for Ysgol Plas Brondyffryn together on one site- Primary, Secondary and the High Needs.
- This proposal does not include any changes to the residential provision- Gerddi Glasfryn- this is being looked at as a separate project to establish the long term vision of this.
- There is a need to increase the number of pupil places at the school, school are currently struggling to accommodate any more pupils.
- Due to the change in location and increase in capacity a separate School Organisation proposal will come forward- this will be a formal consultation process with staff, parents, pupils and the community.

Progress to date:

- Appointed Mott MacDonald as the Multi-Disciplinary Consultant- July 2021.
- Development of design brief, tender documents issued- September 2021 to the North Wales Construction Partnership Framework, Lot 5.
- Wates Construction appointed at the end of November 2021 for phase 1- To design the new build and submit to planning.
- Engagement meetings have started with Wates and the school with the headteacher and SLT attending design meetings. Also internal engagement with planning, highways, leisure and ICT have already commenced.
- A number of surveys on the site itself continue to take place.

Timetable:

Pre-planning Consultation	Summer 22
Planning submission	Autumn 22
On site	Spring 23
New building open	Autumn 24

Next Steps:

- Following this meeting a press release will be issued to inform people of the project.
- Before Pre-planning Consultation begins in the Summer, we will invite Wates to present to the Denbigh MAG the plans.